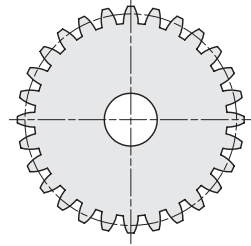
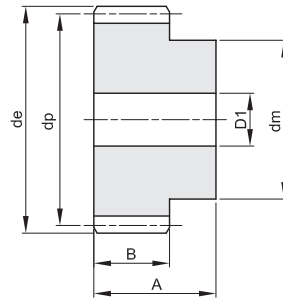
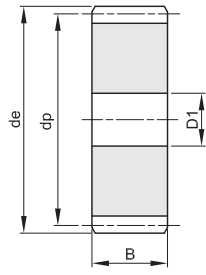


CYLINDRICAL GEARS IN STAINLESS STEEL

MODULE 1

Pressure Angle 20°

A	B
25	15



Material: Stainless Steel AISI 303

Z	Ametric®	de	dp	dm	D1	Kg.
12	SSM1B12	14,0	12,0	9		0,01
13	SSM1B13	15,0	13,0	10		0,02
14	SSM1B14	16,0	14,0	11		0,02
15	SSM1B15	17,0	15,0	12		0,02
16	SSM1B16	18,0	16,0	13		0,03
18	SSM1B18	20,0	18,0	15	8	0,03
20	SSM1B20	22,0	20,0	16	8	0,04
24	SSM1B24	26,0	24,0	20	10	0,06
25	SSM1B25	27,0	25,0	20	10	0,07
30	SSM1B30	32,0	30,0	20	10	0,09
35	SSM1B35	37,0	35,0	25	10	0,14
40	SSM1B40	42,0	40,0	25	10	0,17

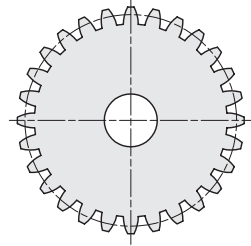
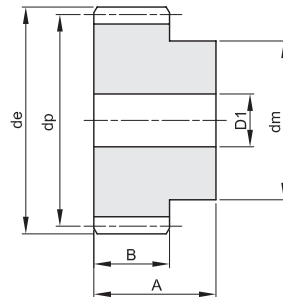
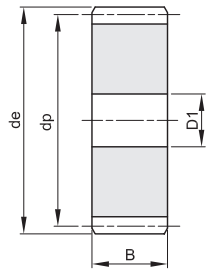
Z	Ametric®	de	dp	dm	D1	Kg.
50	SSM1B50	52,0	50,0	30	12	0,26
60	SSM1B60	62,0	60,0	40	12	0,41
70	SSM1B70	72,0	70,0	50	12	0,58
80	SSM1A80	82,0	80,0		12	0,58
90	SSM1A90	92,0	90,0		12	0,73
100	SSM1A100	102,0	100,0		12	0,91
110	SSM1A110	112,0	110,0		12	1,10
120	SSM1A120	122,0	120,0		12	1,32

CYLINDRICAL GEARS IN STAINLESS STEEL

MODULE 1,5

Pressure Angle 20°

A	B
30	17



Material: Stainless Steel AISI 303

Z	Ametric®	de	dp	dm	D1	Kg.
12	SSM1.5B12	21,0	18,0	14	8	0,04
13	SSM1.5B13	22,5	19,5	15	8	0,05
14	SSM1.5B14	24,0	21,0	17	8	0,06
15	SSM1.5B15	25,5	22,5	18	8	0,07
18	SSM1.5B18	30,0	27,0	20	8	0,10
20	SSM1.5B20	33,0	30,0	25	8	0,13
24	SSM1.5B24	39,0	36,0	25	10	0,17
25	SSM1.5B25	40,5	37,5	25	10	0,18
30	SSM1.5B30	48,0	45,0	30	12	0,26
40	SSM1.5B40	63,0	60,0	40	12	0,48
50	SSM1.5B50	78,0	75,0	50	14	0,76
60	SSM1.5B60	93,0	90,0	60	16	1,09

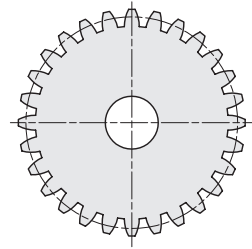
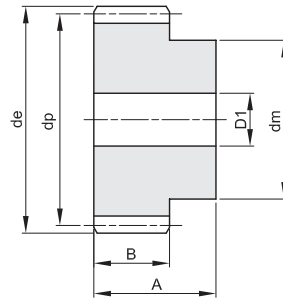
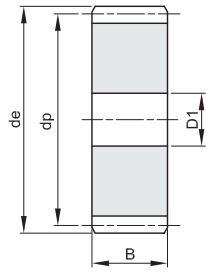
Z	Ametric®	de	dp	dm	D1	Kg.
70	SSM1.5B70	108,0	105,0	70	16	1,50
80	SSM1.5A80	123,0	120,0		16	1,48
120	SSM1.5A120	183,0	180,0		16	3,36

CYLINDRICAL GEARS IN STAINLESS STEEL

MODULE 2

Pressure Angle 20°

A	B
35	20



Material: Stainless Steel AISI 303

Z	Ametric®	de	dp	dm	D1	Kg.
12	SSM2B12	28,0	24,0	18	10	0,08
13	SSM2B13	30,0	26,0	20	10	0,10
14	SSM2B14	32,0	28,0	22	10	0,12
15	SSM2B15	34,0	30,0	24	10	0,14
20	SSM2B20	44,0	40,0	30	10	0,26
24	SSM2B24	52,0	48,0	35	12	0,36
25	SSM2B25	54,0	50,0	35	12	0,39
30	SSM2B30	64,0	60,0	40	14	0,55
40	SSM2B40	84,0	80,0	50	14	0,97
50	SSM2B50	104,0	100,0	70	16	1,62
60	SSM2B60	124,0	120,0	70	16	2,16
80	SSM2A80	164,0	160,0		20	3,09

Z	Ametric®	de	dp	dm	D1	Kg.

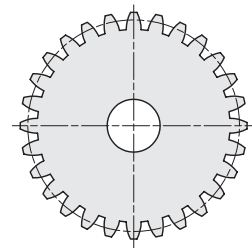
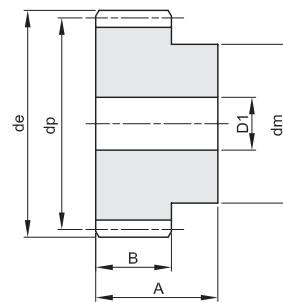
CYLINDRICAL GEARS IN STAINLESS STEEL

MODULE 2,5

Pressure Angle 20°

A	B
45	25

Material: Stainless Steel AISI 303



Z	Ametric®	de	dp	dm	D1	Kg.
12	SSM2.5B12	35,0	30,0	22	10	0,17
13	SSM2.5B13	37,5	32,5	25	10	0,21
14	SSM2.5B14	40,0	35,0	28	10	0,25
15	SSM2.5B15	42,5	37,5	30	10	0,30
20	SSM2.5B20	55,0	50,0	40	12	0,54
24	SSM2.5B24	65,0	60,0	45	14	0,74
25	SSM2.5B25	67,5	62,5	50	14	0,85
30	SSM2.5B30	80,0	75,0	55	14	1,18
40	SSM2.5B40	105,0	100,0	70	16	2,06
50	SSM2.5B50	130,0	125,0	80	20	3,07
60	SSM2.5B60	155,0	150,0	100	20	4,57

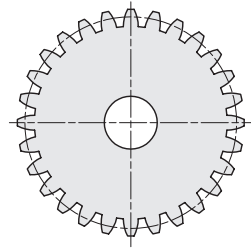
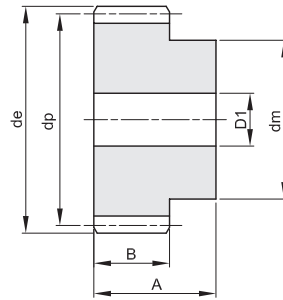
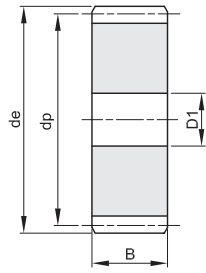
Z	Ametric®	de	dp	dm	D1	Kg.

CYLINDRICAL GEARS IN STAINLESS STEEL

MODULE 3

Pressure Angle 20°

A	B
50	30



Material: Stainless AISI 303

Z	Ametric®	de	dp	dm	D1	Kg.
12	SSM3B12	42,0	36,0	27	12	0,28
15	SSM3B15	51,0	45,0	35	12	0,47
20	SSM3B20	66,0	60,0	45	14	0,84
24	SSM3B24	78,0	72,0	50	16	1,18
25	SSM3B25	81,0	75,0	60	16	1,39
30	SSM3B30	96,0	90,0	60	16	1,85
40	SSM3B40	126,0	120,0	80	20	3,31
50	SSM3A50	156,0	150,0		20	4,06
60	SSM3A60	186,0	180,0		20	5,89

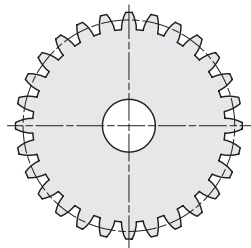
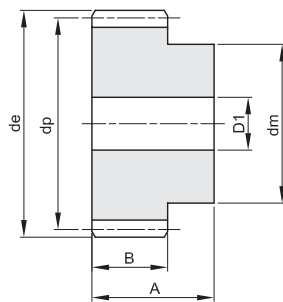
Z	Ametric®	de	dp	dm	D1	Kg.

CYLINDRICAL GEARS IN STAINLESS STEEL

MODULE 4

Pressure Angle 20°

A	B
60	40



Material: Stainless Steel AISI 303

Z	Ametric®	de	dp	dm	D1	Kg.
12	SSM4B12	56,0	48,0	35	14	0,63
13	SSM4B13	60,0	52,0	40	14	0,78
14	SSM4B14	64,0	56,0	45	14	0,93
15	SSM4B15	68,0	60,0	45	14	1,05
20	SSM4B20	88,0	80,0	60	16	1,90
24	SSM4B24	104,0	96,0	75	20	2,79
25	SSM4B25	108,0	100,0	75	20	2,98
30	SSM4B30	128,0	120,0	75	20	4,06

Z	Ametric®	de	dp	dm	D1	Kg.